

**Instructions for installation and use** - English  
Battery-powered electric cleaner  
Translation of the original instructions in French

**EN**

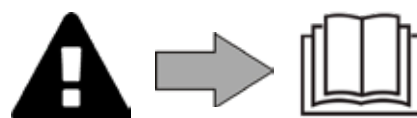


More documents on:  
[www.zodiac.com](http://www.zodiac.com)





according to product marking

H0783900\_REVA - 2024/03 - ET3101



## WARNINGS

### GENERAL WARNINGS

- Failure to respect the warnings may cause serious damage to the pool equipment or cause serious injury, even death.
- Only a person qualified in the technical fields concerned (electricity, hydraulics or refrigeration) is authorised to perform any servicing or repairs to the appliance. The qualified technician working on the appliance must use/wear personal protective equipment (such as safety goggles and protective gloves, etc.) in order to reduce the risk of injury occurring when working on the appliance.
- Before handling the machine, ensure that it is switched off and isolated.
- The appliance is intended to be used with pools for a specific purpose; it must not be used for any purpose other than that for which it was designed.
- This appliance is not intended for use by individuals (including children) with impaired physical, sensorial or mental abilities, or persons lacking in knowledge and experience, unless they receive supervision or prior instructions on using the appliance from a person responsible for their safety. Children must be supervised to ensure that they do not play with the appliance.  
- This appliance can be used by children under 8 and adults with impaired physical, sensory or mental capabilities, or who lack experience and knowledge, if they are correctly supervised or have been instructed in how to use the appliance safely and understand the hazards involved. Children and pets shall not play with the appliance. This is not a toy. User cleaning and maintenance operations must not be carried out by children without supervision.
- The charging of the appliance must follow standard IEC / HD 60364-7-702 and required national rules for swimming pools, should you have any doubts please consult your dealer.
- The appliance must be installed according to the manufacturer's instructions and in compliance with local standards in force. The installer is responsible for installing the appliance and for compliance with national installation regulations. Under no circumstances may the manufacturer be held liable in the event of failure to comply with applicable local installation standards.
- For any work other than the simple user maintenance described in this manual, the product should be referred to a qualified professional.
- If the appliance suffers a malfunction, do not try to repair it yourself; instead contact a qualified technician. The product manufacturer is exempt from all liability regarding any damage caused by unauthorized spare parts or accessories.
- Refer to the warranty conditions for details of the permitted water balance values for operating the appliance.
- Deactivating, eliminating or by-passing any of the safety mechanisms integrated into the appliance shall automatically void the warranty, in addition to the use of spare parts manufactured by unauthorised third-party manufacturers.
- Do not spray insecticide or any other chemical (flammable or non-flammable) in the direction of the appliance, as this may damage the body and cause a fire.
- Do not touch the fan or moving parts and do not place a rod or your fingers in the vicinity of the moving parts during operation of the appliance. Moving parts can cause serious injury or even death.
- This product is intended to be used in chlorine treated pools. DO NOT use in salt treated pools. Failure to use the product as specified in the documentation will void the warranty. Deposits on the charging pins and/or on the charger are signs that the product has not been used correctly.

### WARNINGS ASSOCIATED WITH ELECTRICAL APPLIANCES

- The power supply to the appliance must be protected by a dedicated 30 mA residual current device, complying with the standards and regulations in force in the country

in which it is installed.

- Do not use any extension lead when connecting the appliance; connect the appliance directly to a suitable power supply.
- Before carrying out any operations, check that:
  - The required input voltage indicated on the appliance information plate corresponds to the mains voltage;
  - The mains supply is compatible with the appliance's electricity needs and is correctly grounded;
  - The plug (where applicable) is compatible with the socket.
- In the event of abnormal operation or the release of odours from the appliance, turn it off immediately, unplug it from its power supply and contact a professional.
- Before servicing or performing maintenance on the appliance, check that it is powered off and completely disconnected from the charger.
- If the power cord is damaged, it must be replaced by the manufacturer, an authorised representative or a repair facility only.
- Before connecting the appliance to the charger, check that the connection unit or socket to which the appliance will be connected is in good condition and shows no signs of damage or rust.
- In stormy weather, disconnect the appliance from the power supply to prevent it from suffering lightning damage.
- The product contains magnets and components that emit electromagnetic fields. The magnets and electromagnetic fields can interfere with pacemakers, defibrillators and other medical devices. Keep a safe distance between the medical device and the product. Consult your doctor or the manufacturer of the medical device for specific information about it. If you think that the product is interfering with a pacemaker, defibrillator, or any other medical device, stop using the product starting from the distance at which you feel interference.

#### **WARNINGS ASSOCIATED WITH BATTERY-POWERED ELECTRICAL APPLIANCES**

- Do not use a battery block, cleaner or charger that is damaged or modified. Damaged or modified batteries may exhibit unpredictable behavior resulting in fire, explosion or risk of injury.
- Do not handle the cleaner and the charger while it is charging with wet limbs and without shoes.
- Do not attempt to clean the impeller when the cleaner is in water or on a wet surface. This may lead to severe injury.
- Recharge only with the charger specified by the manufacturer. A charger that is suitable for one type of battery pack may create a risk of fire when used with another battery pack.
- Do not expose the charger or cleaner to fire or excessive temperature. Exposure to fire or temperature above 65°C may cause explosion.
- The appliance must be charged in a temperature between 5-43°C.
- Follow all charging instructions and do not charge the battery operated appliance outside of the temperature range specified in the instructions. Charging improperly or at temperatures outside of the specified range may damage the battery and increase the risk of fire.
- The charger must be used indoor in a dry and well ventilated area, away from direct sunlight, children, heat, ignition sources, and pool chemicals.
- Never attempt to open the charger.
- The battery installed is a rechargeable Li-ion battery pack. Never attempt to disassemble or replace it. A battery can produce a short circuit causing severe burns.
- Avoid contact between any wires or metal items that could cause sparking and short circuit the battery. If a battery leak occurs, avoid any contact with the leaking fluids and contact a professional to replace the battery. Wear complete eye protection, gloves and protective clothing when disposing of cleaner. If leaking fluids come in contact with skin and clothing, wash immediately with plenty of soap and water. If

leaking fluids come in contact with eyes, do not rub eyes, immediately flush eyes with cool running water for at least 15 minutes and do not rub them. Seek medical attention as soon as possible.

#### **SPECIFIC FEATURES APPLICABLE TO “Pool cleaners”**

- The cleaner is designed to operate properly in pool water at a temperature of between 10°C and 35°C.
- To avoid possible injury or damage to the cleaner, do not operate the cleaner out of the water.
- In order to prevent possible injury, bathing is prohibited when your cleaner is in the pool.
- Do not use the cleaner during shock chlorination.
- Do not leave the cleaner unattended for an extended period.
- Do not operate during freezing weather conditions.

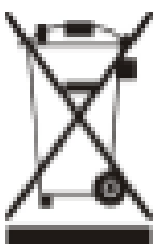
#### **WARNING ON THE USE OF A CLEANER IN A POOL WITH A LINER**

- Before installing the cleaner, carefully inspect the pool lining. If the liner comes away or is damaged in places, or if stones, folds, roots or corrosion appear, do not install the cleaner before a qualified professional repairs or replaces the liner. The manufacturer may not be held liable in any way for damage caused to the liner.
- The surface of certain patterned liners can wear away quickly: the patterns and/or colours can become deteriorated, faded or disappear on contact with certain objects (cleaning brushes, toys, rubber rings and floats, chlorine dispensers, or cleaners). The cleaner manufacturer may not be held liable for wear to the liners or faded patterns, which are not covered by the limited warranty.

#### **WARNING ON THE USE OF A CLEANER IN A STAINLESS STEEL POOL**

- The surface of some stainless steel pools may actually be very fragile. The surface of these pools can become damaged by the natural rubbing of debris against the coating, caused for example by cleaner wheels, tracks or brushes, including those of electric pool cleaners. The cleaner manufacturer may not be held liable for wear or scratching affecting stainless steel pools, which are not covered by the limited warranty.

EN



#### **Recycling and Disposal**

This symbol is required by the European directive WEEE 2012/19/EU (directive on waste electrical and electronic equipment) and means that your appliance must not be thrown into a normal bin. It will be selectively collected for the purpose of reuse, recycling or transformation. If it contains any substances that may be harmful to the environment, these will be eliminated or neutralised. Contact your retailer for recycling information.

Battery and cleaner must be disposed of in accordance with local requirements. Always dispose of batteries in a sustainable way in approved collection bins or at authorised collection centers in accordance with local law. Recycling is required. Contact your local authority for more information.



- Before handling the appliance, it is vital that you read this installation and user manual, as well as the "Warranty" booklet delivered with the appliance. Failure to do so may result in material damage or serious or fatal injury and will void the warranty.
- Keep and pass on these documents for reference during the appliance's service life.
- The distribution or modification of this document in any way is prohibited, without prior authorisation from Zodiac®.
- Zodiac® is constantly developing its products to improve their quality. The information contained herein may therefore be modified without notice.

## CONTENTS



### 1. Information before using the appliance

5

1.1. Description

5

1.2. Technical specifications and parts list

6



### 2. Use

7

2.1. Operating principle

7

2.2. Pool preparation

7

2.3. Attaching the floating ring

7

2.4. Charging the cleaner

7

2.5. Starting a cleaning cycle

8

2.6. Removing the cleaner from the water

9



### 3. Maintenance

10

3.1. Cleaning the cleaner

10

3.2. Cleaning the filter

10

3.3. Cleaning the brush

10

3.4. Cleaning the cover seal

10

3.5. Cleaning the propeller

11

3.6. Replacing the brush

12

3.7. Replacing the tracks

13

3.8. Replacing the battery block

13

3.9. Replacing the charging pins

13

3.10. Winterising

13



### 4. Troubleshooting

14

4.1. Appliance behaviour

14

4.2. User alerts

15



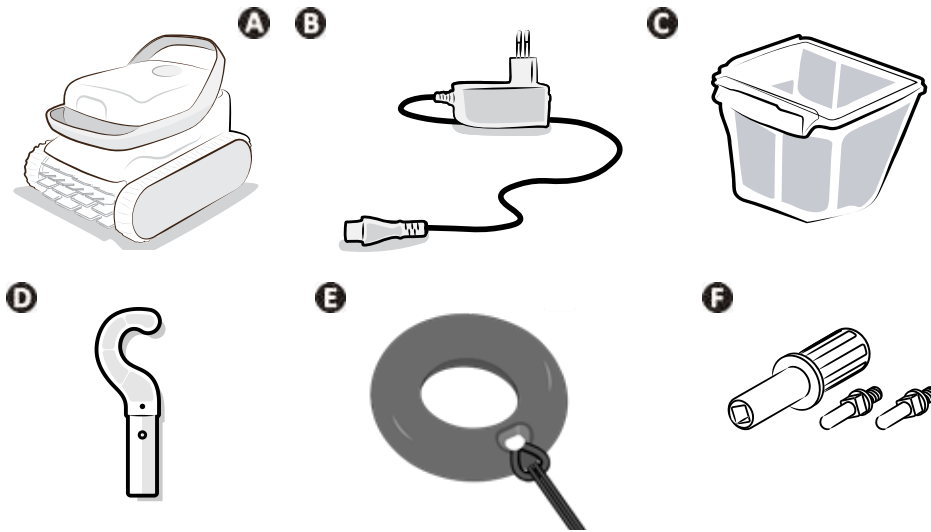
#### **Tip: to make it easier to contact your retailer**

Write down your retailer's contact details to help you find them more easily and fill in the "product" information on the back of the manual; your retailer will ask you for this information.



# 1. Information before using the appliance

## 1.1. Description



<b>A</b>	Cleaner
<b>B</b>	Charger (for indoor use)
<b>C</b>	150µ fine debris filter
<b>D</b>	Hook <i>A pool pole (standard model, not included) is required to remove the cleaner from the water.</i>
<b>E</b>	Floating ring <i>Supplied with a nylon cord</i>
<b>F</b>	Charging pin replacements



### Detachable power supply (external adaptor)

Use ONLY the detachable power supply provided with this appliance.

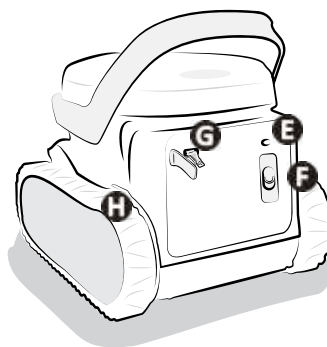
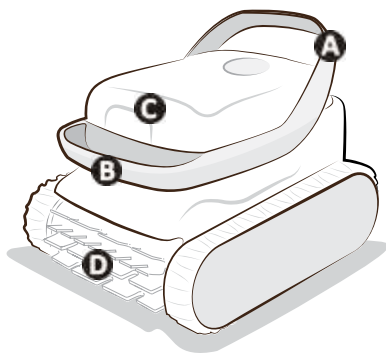
## ➤ 1.2. Technical specifications and parts list

### 1.2.1. Technical specifications

Power supply voltage	110 - 240 VAC, 50/60Hz, Class II*	
Cleaner power supply voltage	21.6 V	
Charge voltage	25.2 V	
Charger maximum power	25 W	
Battery capacity	5.1 Ah	
Cleaner rated power	100 W	
Filter capacity	2 L	
Cleaner size (L x W x h)	36 x 29 x 29 cm	
Package size (L x W x H)	39 x 33 x 33 cm	
Cleaner weight	5.8 kg	
Packaged weight	8 kg	
Suction width	168 mm	
Maximum operating depth	4 m	
Protection rating	Cleaner	IPX8

\*Class II: appliance with double insulation or reinforced insulation that does not require grounding.

### 1.2.2. Parts List



- A**: Rear handle
- B**: Front handle
- C**: Filter access
- D**: Brush
- E**: Indicator light (LED)
- F**: ON/OFF slider
- G**: Charging port and protective cap
- H**: Tracks



## 2. Use

### 2.1. Operating principle

The cleaner is independent from the filtration system and can, once charged, operate autonomously. It finds the best route to move around and clean the areas of the pool for which it has been designed (floor only). Debris are sucked in and stored in the cleaner's filter.

### 2.2. Pool preparation



- This product is intended to be used in above ground or small in-ground pools. Do not use it in pools which may be easily dismantled.
- This product is intended to be used in chlorine treated pools. **DO NOT** use in salt treated pools. Failure to use the product as specified in the documentation will void the warranty. Deposits on the charging port and/or on the charger are signs that the product has not been used correctly.
- **DO NOT** use an extension cord.

EN

The appliance must operate in pool water with the following properties:

Water temperature	Between 10°C and 35°C
pH	Between 6.8 and 7.6
Chlorine	< 3 mg/l

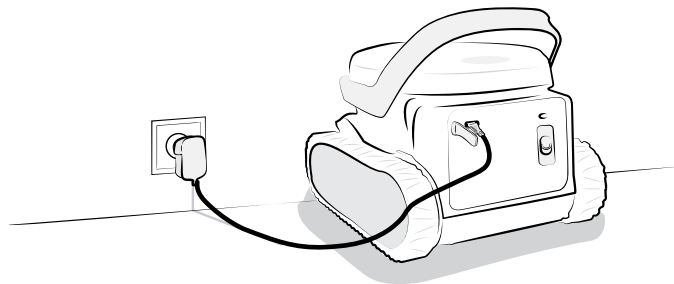
- When the pool is dirty, especially when commissioning, remove the largest debris using a net in order to optimise the appliance's performances.
- Remove any thermometers, toys, and other objects that might damage the appliance.

### 2.3. Attaching the floating ring

To facilitate the extraction of the cleaner from the pool, a floating ring (supplied) can be attached to one of the handles. The floater must be installed before the first immersion of the cleaner.

- To attach the floating ring, tie the supplied nylon cord around one handle.
- Only use the floating ring in flat bottom pools.

### 2.4. Charging the cleaner



- Only use the charger supplied.
- Do not leave the cleaner drained of charge.
- Make sure the protective cap is on before launching a cycle.
- Make sure the charging port is dry before connecting the charger.
- Make sure the cleaner is fully charged before winterising.
- Do not charge the cleaner below 5°C and above 43°C.

To charge the cleaner:

- Remove the protective cap at the back of the cleaner.
- Dry the charge port before charging. Connect the charger to the mains indoors, without direct sun exposition, at least 3.5 m away from the pool.
- Check that the cleaner is charging correctly: the LED blinks orange (see "2.5.2. Indicator light description", page 8).
- Charging stops automatically as soon as the cleaner is fully charged.



## 2.5. Starting a cleaning cycle

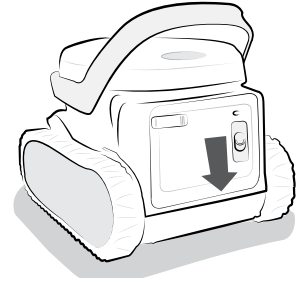


In order to avoid any risk of injury or material damage, follow the instructions below:

- Bathing is prohibited when the appliance is in the pool.
- Do not use the appliance during a shock chlorination. Wait until the chlorine level has reached the recommended value before immersing the cleaner.

### 2.5.1. Starting the cleaning cycle

- Wait until the cleaner is sufficiently charged to start a cycle (green light flashing).
- Once charged, unplug the charger cable and put the protective cap back on the charging port.
- Push down the slider to start a cycle - the LED turns on green.
- Immerse the cleaner, see “2.5.3. Immersing the cleaner”. You have 30 seconds to put the cleaner in the water, otherwise you will need to restart a cycle.



### 2.5.2. Indicator light description











- The indicator light on the back of the cleaner gives you information on the cleaner and battery status.
- When the LED is off, the cleaner is on standby. Push the slider down to wake it up. If this has no effect, plug the cleaner back to the charging cable.



→ Blinking indicator



→ Indicator on

Status	Indicator light	Meaning
<b>Charging</b> <i>The cleaner is plugged to the charging cable.</i>	 Green	Steady: Charged, ready for use. Blinking: Charging, ready to run a complete cycle
	 Orange	Charging, the cleaner cannot be used
	 Red	Error (see «4.2. User alerts», page 15)
<b>Switched ON</b> <i>The cleaner isn't charging and the slider has been pushed down</i>	 Green	Ready to be immersed
	 Orange	Low battery, cycle might be shortened
	 Orange	The LED blinks 3 times then the cleaner goes idle: Very low battery, cleaner cannot be used
	 Red	Error (see «4.2. User alerts», page 15)
<b>Operating</b> <i>A cycle has been launched and the cleaner is immersed in the pool</i>	 Green	Cycle in progress
	 Orange	Low battery
	 Red	Error, cycle stops (see «4.2. User alerts», page 15)
	Off	Cycle is complete

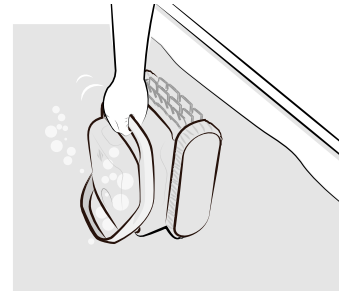
### 2.5.3. Immersing the cleaner



**Do not immerse the cleaner if the protective cap hasn't been put back in the charging port.**

After a cycle is started (slider pushed down, green LED on) you have 30 seconds to put the cleaner in the water. Otherwise you must start over.

- Place the cleaner vertically into the water and hold it there while moving it slightly in all directions so that the air inside it comes out.
- Let the cleaner sink to the bottom of the pool. The cycle will start at the latest 30 seconds (TBD) after it detects that it is in water. A complete cycle lasts 1h30.



### 2.6. Removing the cleaner from the water



**To prevent damage to the equipment:**

- Do not leave the appliance to dry out in sunlight after use.
- Store all the elements away from sunlight, humidity, and bad weather.

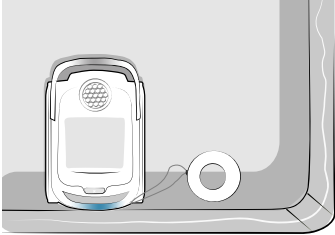
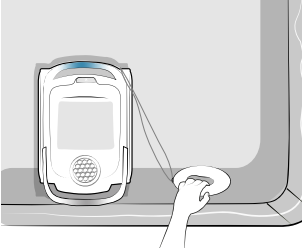
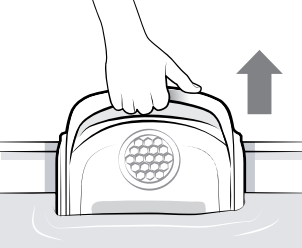
At the end of the cleaning cycle, the appliance stops at the bottom of a wall and the LED switches off.

There are 2 ways to remove the cleaner from the water:

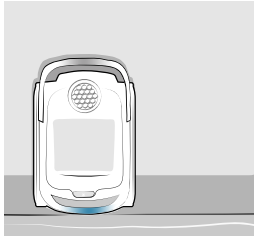
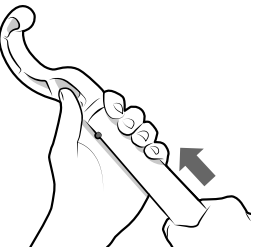
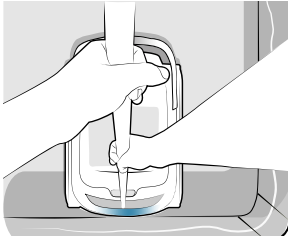
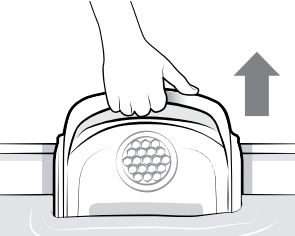
- Using the floating ring, or
- Using the hook

**Note:** The cleaner can be removed mid-cycle. It stops automatically as soon as it is out of the water.

#### 2.6.1. Using the floating ring

The cleaner waits at the bottom of a wall.	Use the floating ring (supplied) to lift the cleaner to the surface.	Use the handle to remove it from the water.
		

#### 2.6.2. Using the hook

The cleaner waits at the bottom of a wall.	Fasten the hook (supplied) to the end of a pool pole (not supplied).	Hook onto the front handle and lift the cleaner to the surface.	Use the handle to remove it from the water.
			



## 3. Maintenance



**Tip: To ensure the longest possible lifetime for the cleaner**

Inspect all of the parts for which servicing is detailed in this chapter once a month.

### 3.1. Cleaning the cleaner

The appliance must be cleaned regularly using clean or slightly soapy water. Do not use solvents.

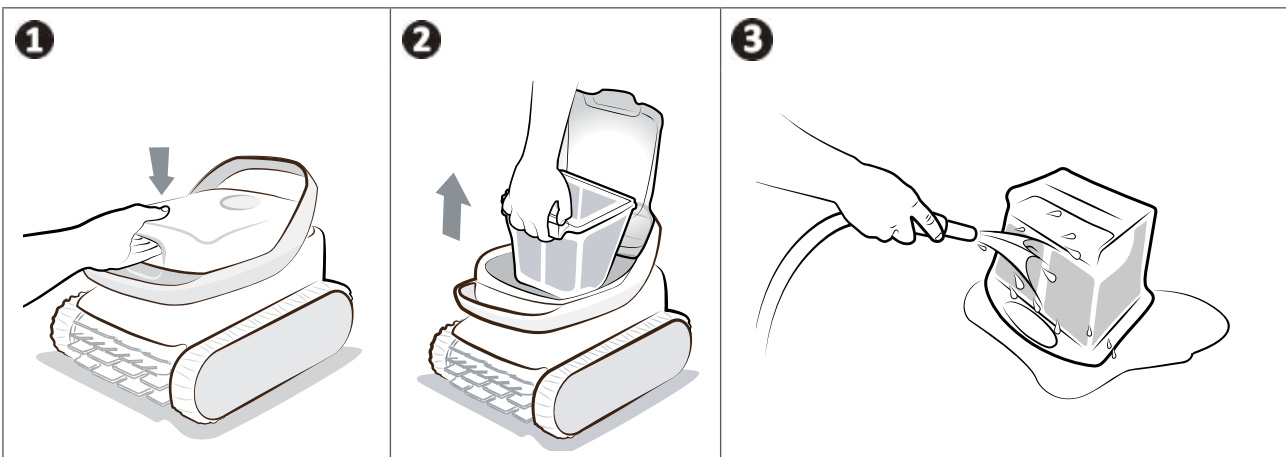
- Rinse the appliance thoroughly with clean water.
- Do not let your appliance dry in the sun by the pool.

### 3.2. Cleaning the filter



- The cleaner's performance may be reduced if the filter is full or dirty.
- Clean the filter regularly with clean water for efficient pool cleaning.

1. Open the cleaner.
2. Remove the filter.
3. Rinse carefully with clear water.



**Tip: If the filter is clogged**

Clean the filter with an acidic solution (such as spirit vinegar) at least once a year. The filter may clog if not used for several months (winterising period).

### 3.3. Cleaning the brush



The performance of the appliance may diminish if the brush is too dirty or if debris or objects are trapped inside.

- Clean the brush in clean water as soon as the appliance is removed from the pool after each cleaning cycle. Do not wait for the debris to dry.
- Remove any object or debris trapped in the brush.

### 3.4. Cleaning the cover seal



Appliance performance may diminish if debris (mainly sand) becomes trapped under the cover seal, making it impossible to maintain the necessary waterproofing.

Clean the cover seal in clean water as soon as the appliance is removed from the pool after each cleaning cycle. Do not wait for the debris to dry.



**Tip: To preserve the integrity of the cleaner and guarantee optimum performance:**

- The filter and brush should be replaced every two years,
- Checking the wear indicator on the tracks is recommended. Replace the tracks as soon as the indicator is reached.

### 3.5. Cleaning the propeller



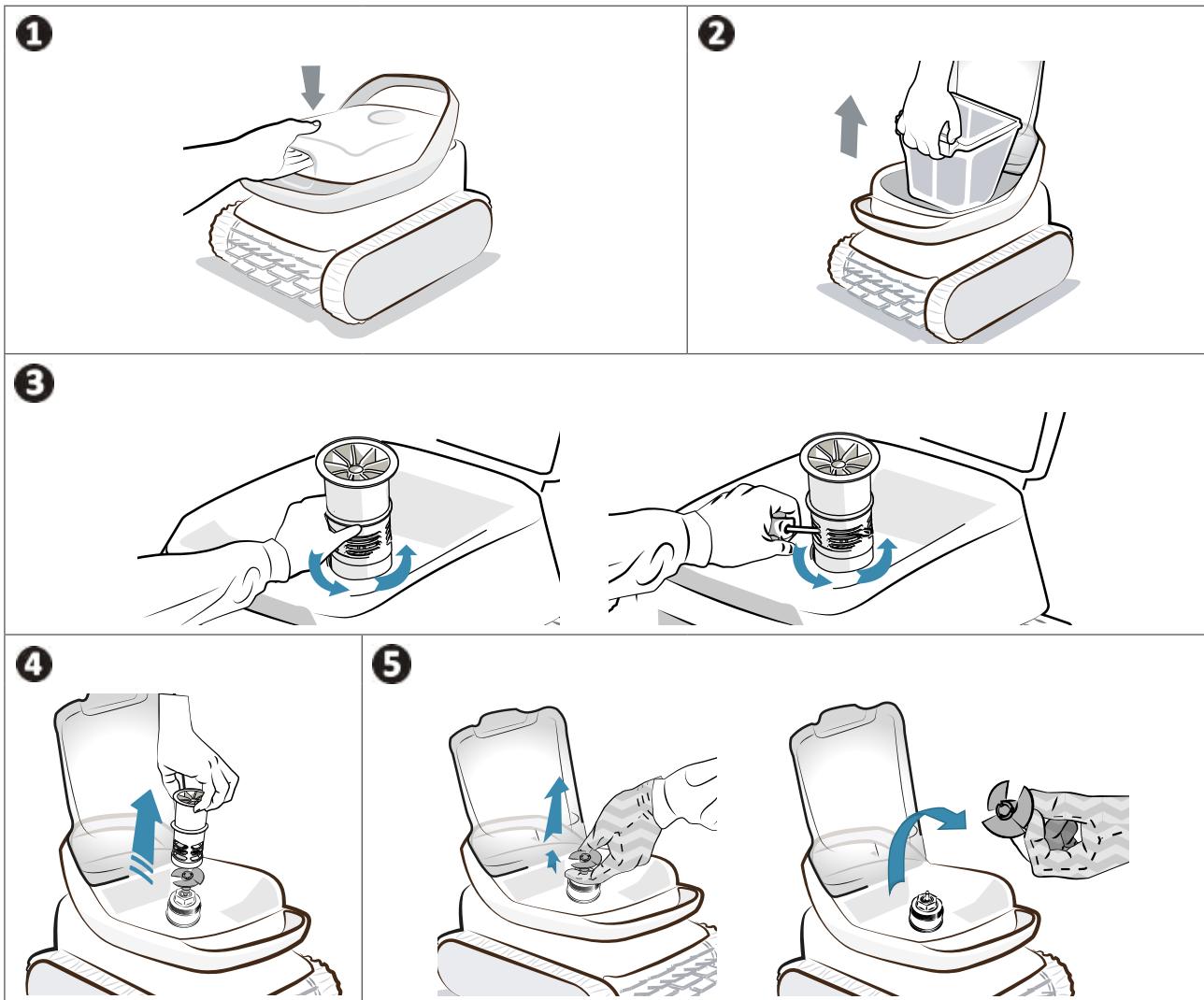
To avoid serious injury:

- Wear gloves when maintaining the propeller .
- Always dry the appliance before cleaning the propeller and clean the propeller in a dry area.
- Ensure cleaner is in the OFF mode before attempting maintenance (see the first step below).

Be careful to force the cleaner to stop before cleaning the propeller (maintain the slider down for 20 seconds). Check that the cleaner is completely off by moving the slider - no indicator should light up.

1. Open the filter access hatch by pressing on the lock.
2. Remove the filter.
3. Unscrew the flow guide by hand. When first removed, it may be necessary to loosen it with a screwdriver.
4. Remove the flow guide by lifting it.
5. Put on a pair of gloves and pull the propeller, holding it firmly to take it out.

Remove all debris (leaves, stones, etc.) which may be blocking the propeller.

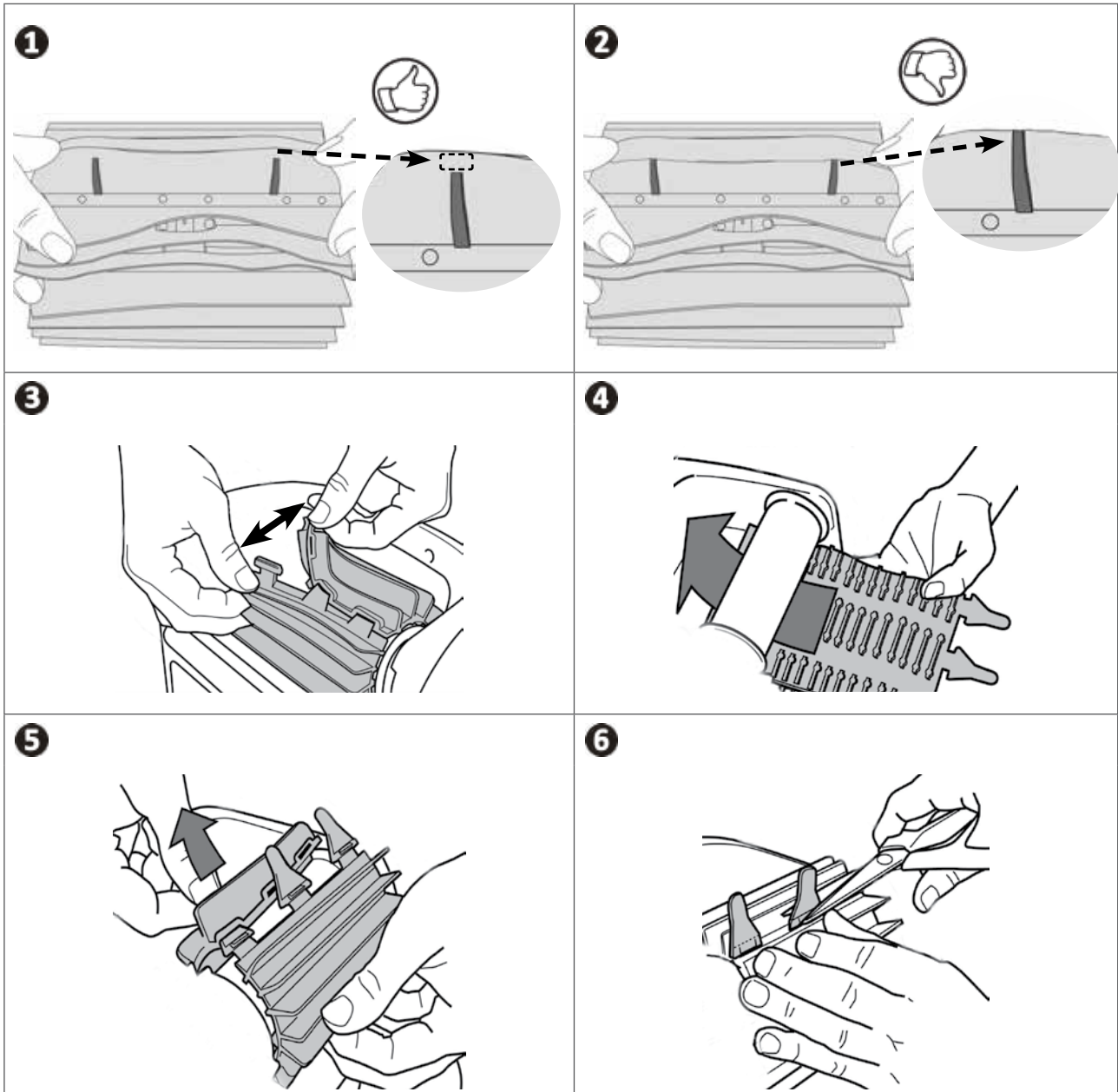


Once cleaning is finished, put on a pair of gloves and put the flow guide back in, screwing it in by hand, then firmly push the propeller back in place. Refit the filter.

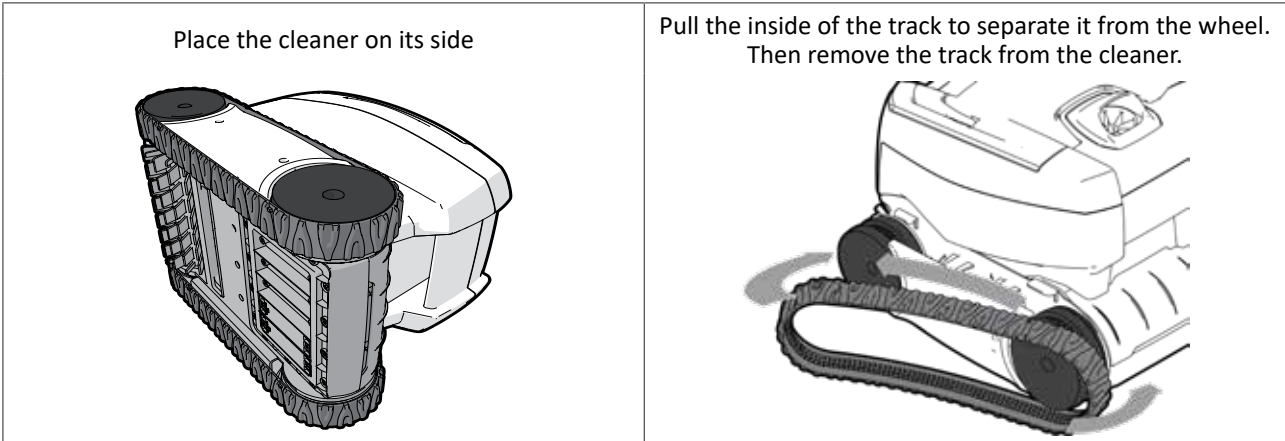
EN

### ➤ 3.6. Replacing the brush

1. The brush is equipped with wear indicators; the distance between the indicators and the end of the brush indicates whether the brush is in good condition.
2. When the wear indicators appear, the brush is worn and should be replaced.
3. To remove the worn brush, remove the tabs from the holes in which they are fixed.
4. To fit the new brush, start by fitting the side without tabs under the brush holder.
5. Roll the brush around its support, slide the tabs into the attachment holes and pull on the end of each tab until its edge passes through the slit.
6. Cut the tabs using a pair of scissors for them to be below flap level.



### ➤ 3.7. Replacing the tracks



To install the new track, position the inside of the track on the first wheel's grooves.

1. Stretch the track around the second wheel. Press down on the track to position it correctly on the wheel grooves.
2. Make sure that the track passes under the guides (if the model includes track guides).

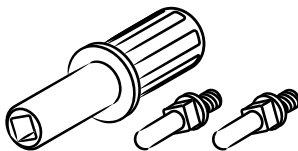
### ➤ 3.8. Replacing the battery block



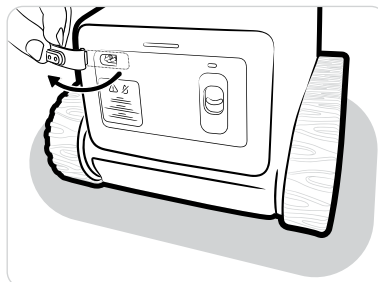
The cleaner's battery block should only be replaced by a qualified professional: Contact your retailer 

### ➤ 3.9. Replacing the charging pins

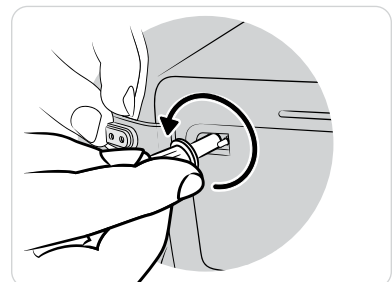
Pin replacement kit



1. Open the charge port



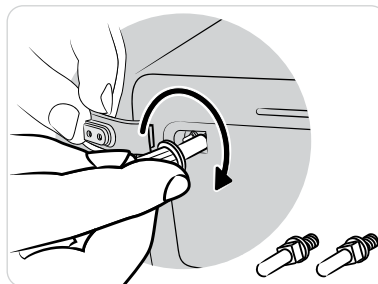
2. Remove the used charge pins



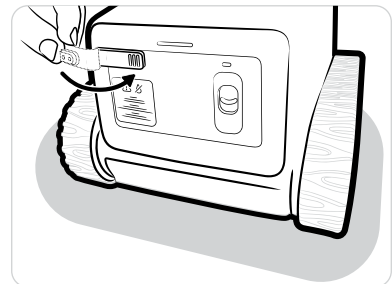
3. Take the new pins



4. Mount the pins



5. Close the charge port



### ➤ 3.10. Winterising

- Before winterising, fully charge the cleaner to preserve the life of the battery: the indicator changes to steady green as soon as the cleaner is fully charged.
- During winterising, the cleaner may:
  - Remain plugged to the charger (so that it is ready to be used immediately at the start of the next season, or
  - Remain unplugged from the charger (then it must be recharged before it is used for the first time next season).
- Store all elements away from direct sunlight and any splashes.
- Store out of reach of children and pets.
- DO NOT expose cleaner to fire, excessive temperatures, ignition sources, or pool and spa chemicals.



## 4. Troubleshooting

If a problem occurs, before you contact your retailer, please carry out these few simple checks using the following tables.



If the problem persists, contact your retailer.









: Actions to be performed by a qualified technician only

### 4.1. Appliance behaviour

Cleaner does not clean the entire pool	<ul style="list-style-type: none"> <li>Repeat the immersion steps (see “2.5.3. Immersing the cleaner”), varying the immersion location until you find the right place in the pool.</li> <li>The filter is full or dirty: clean it (see “3.2. Cleaning the filter”).</li> </ul>
Cleaner does not stay firmly on the pool floor	<ul style="list-style-type: none"> <li>There is still air in the appliance's casing. Repeat the immersion operations (see “2.5. Starting a cleaning cycle”).</li> <li>The filter is full or dirty: clean it (see “3.2. Cleaning the filter”).</li> <li>If the filter remains clogged despite cleaning: replace it.</li> <li>The propeller is damaged: </li> </ul>
Cleaner does not collect debris	<ul style="list-style-type: none"> <li>The filter is full or dirty: clean it (see “3.2. Cleaning the filter”).</li> <li>If the filter remains clogged despite cleaning: replace it.</li> <li>Debris / objects are stopping the filter valves from closing: Contact your retailer </li> <li>Debris / objects are getting trapped in the front brush and are not being collected: Clean the brush. Clean them regularly.</li> <li>Debris (mainly sand) is getting trapped in the cover seal: Clean the cover seal. Clean it after every cycle.</li> </ul>
Cleaner is ON but does not react while operating	<ul style="list-style-type: none"> <li>Check that the cleaner is charged (the battery indicator is blinking or steady green).</li> <li>Check that the slider is sliding properly to its down position then going back to its initial position.</li> <li>Propeller should turn ON intermittently to sense water. If not, make sure no debris are locking propeller (see “3.5. Cleaning the propeller”).</li> <li>Cleaner's LED turns GREEN, but propeller does not turn at all: contact your retailer .</li> </ul>
Cleaner does not turn ON when pulling the slider down	<ul style="list-style-type: none"> <li>Cleaner turns OFF after a long time of inactivity, plug back the indoor charger to wake it up, then it is ready for a cycle if battery is charged.</li> <li>Battery is fully discharged, plug on indoor charger for a complete charging cycle.</li> </ul>
The floating ring is not on the surface of the water	<ul style="list-style-type: none"> <li>Check the cord and adjust the length if necessary.</li> </ul>
Cleaner is not charging	<ul style="list-style-type: none"> <li>Make sure the indoor charger's LED turns green when plugged in without the cleaner. If not, check power supply (unplug/plug), or replace the charger.</li> <li>Make sure the charger's LED turns red when cleaner is connected to it. If not, check: <ul style="list-style-type: none"> <li>The condition of the wire - if damaged, replace indoor charger</li> <li>The condition of the charger output plug - if there are signs of corrosion on contacts, clean them when unplugged or replace the charger.</li> <li>The condition of the cleaner's contacts - if there are signs of corrosion on the pins, clean them with a small brush. Replace the pins if needed (“3.9. Replacing the charging pins”). If the issue persists after cleaning the charge port, contact your retailer.</li> </ul> </li> <li>Make sure the cleaner's LED does blink orange or green when connected to the charger for charging. If not, contact your retailer .</li> </ul>

## 4.2. User alerts

- The indicator on the rear of the cleaner blinks to report an alert to the user.
- Depending on the number of consecutive blinks, the error is as such :

Blinks	Error	Solutions
 Red	Motor	<ul style="list-style-type: none"> <li>• Check that debris is not preventing the brushes or tracks from moving freely.</li> <li>• Rotate each wheel by a quarter of a turn in the same direction until it rotates smoothly. Repeat turning wheels in the opposite direction until rotation is smooth.</li> <li>• If this fails to solve the problem, contact your retailer for a full diagnosis..</li> </ul>
 Red	Battery	<ul style="list-style-type: none"> <li>• The battery block is faulty, contact your retailer </li> </ul>
 Red	Charging (charger or charging port)	<ul style="list-style-type: none"> <li>• Check if there are signs of corrosion on the charging port or the charger, clean them with a small brush.</li> <li>• Replace the charging pins on the charging port («3.8. Replacing the battery block»).</li> <li>• If the charger is still faulty, contact your retailer </li> </ul>
 Red	Temperature over limits (high or low)	<ul style="list-style-type: none"> <li>• The temperature detected is outside of the recommended temperature range for recharging the cleaner (5°-43°C).</li> <li>• Make sure that the room's temperature is within the operating range.</li> <li>• Wait until the cleaner's temperature has lowered and plug it again.</li> </ul>



Votre revendeur  
*Your retailer*

Modèle appareil  
*Appliance model*

Numéro de série  
*Serial number*


Pour plus d'informations, enregistrement produit et support client :  
*For more information, product registration and customer support:*

**[www.zodiac.com](http://www.zodiac.com)**

