



» Swimming pool dehumidification solution

Indoor swimming pools and spa rooms are very unique in their maintenance demands. When pool water is heated to swimming temperatures, large amounts of moisture are released into the indoor pool enclosure. This moisture is heavily laden with chlorine or bromine disinfectants, and it attacks everything it comes in contact with. If left uncontrolled, mold and mildew will eventually permeate indoor swimming pool facility, as well as any adjoining structures.

Human comfort levels are very sensitive to relative humidity. Fluctuation of relative humidity outside the 40% - 60% range can result in increased levels of bacteria, viruses, fungi and other factors that can lead to respiratory problems. DanVex Swimming pool dehumidifier is one of essential components that are necessary in your project for humidity control.

DEH-1700p

Typical Applications for Swimming pool Dehumidifiers

Dehumidification for Home Indoor Swimming Pools

Unchecked moisture causes building insulation to lose its insulating ability. Wooden structures warp, rot and decay. Mold and mildew cause blistering paint and rust formation on metal objects such as light fixtures, conduit, furniture, door knobs and hinges.

The relationship between relative humidity and indoor air quality is well documented. Besides the destructive effects on building components, high relative humidity levels inside a building can pose serious health concerns. They facilitate the growth of mold and mildew which, in addition to being unsightly, can attack wall, floor and ceiling coverings. Spores can adversely impact indoor air quality.

Dehumidification for Hotel pool rooms

A hotel can have many moisture sources. Fountains, reflecting pools and gardens release moisture into the air. Showers, baths and whirlpools in hotel rooms create steam.

A hotel pool room presents even more challenges. Multiple pools and waterslides found in indoor waterparks require high volumes of water. Splashing and perspiring from swimmers increases the normal evaporation rate in the room.

DEH-1700p



DEH-600wp/1000wp



TECHNICAL DATA		DEH-1700p	DEH-600wp	DEH-1000wp
Max capacity, L / 24 hours		163	60	100
Air flow rate, m ³ / hour		1100 m ³ /h	450 m ³ /h	500 m ³ /h
Operating range	Temperature, °C	+5°C to +32°C	+5°C to +32°C	+10°C to +32°C
	Relative Humidity, %	30 % -100 %	40 % - 99 %	40 % - 99 %
Power supply		230 V / 50 Hz		
Power consumption , W		1650 W	920 W	1260 W
Remote control		Yes	Yes	Yes
Dimensions	Height	1790 mm	780 mm	780 mm
	Length	565 mm	1180 mm	1180 mm
	Width	470 mm	270 mm	270 mm
Weight		84 kg	50 kg	55 kg

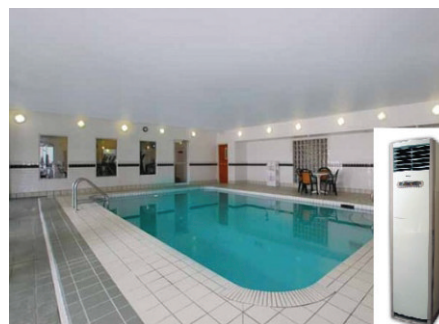
» How swimming pool dehumidifier work

Dehumidification is accomplished by moving room air through the dehumidifying coil which lowers the air temperature below its dew point. Moisture will condense on this coil thus removing a large portion of the moisture from the air.

The heat recovered by the above mentioned process, known as latent heat, and the electrical consumption of the compressor is delivered by the reheat condenser coil. The air leaving the evaporator coil enters the reheat condenser coil and picks up the available heat and exits the dehumidifier as warm dry air.

Danvex Swimming pool dehumidifiers can handle all of your moisture removal needs.

Dehumidifiers DanVex are equipped with electronic control panel and embedded with hydrostat. Condensate drainage system could be connected to household sewer system or drains drainage to the pool. The units comes with a remote control for customer operation. Dehumidifiers DanVex WP-series are easy mounted either floor standing or wall mounting type with accessories kit completed with the unit.



Dehumidification for Health Club Pool and Shower Rooms

A health club or gym can be a breeding ground for bacteria, fungi and mold. Consider the many moisture sources a health club can have: Swimming pools, Whirlpools, Saunas and steam rooms, Shower rooms.

On top of that, every person using the facility to work out will be a moisture source. Perspiration from health club users evaporates into the air. Aside from the moisture load sweat creates, it can give the facility an unpleasant odor.

The advantages in practice

- » Convenient and simple control panel
- » Fully automatic maintaining of specified air humidity
- » Easy installation: floor & wall mounting type
- » Easy in maintenance
- » Modern design
- » Low nose level

The fields of application

- » Home indoor swimming pool
- » Hotel pool rooms
- » Swimming pools
- » Saunas and steam rooms
- » Shower rooms

DEH-1700wp/2000wp/2500wp/4000wp

*** inox (option)



TECHNICAL DATA		DEH-1700wp	DEH-2000wp	DEH-2500wp	DEH-4000wp
Max capacity, L / 24 hours		144	204	252	372
Air flow rate, m ³ / hour		750 m ³ /h	900 m ³ /h	1250 m ³ /h	1550 m ³ /h
Operating range	Temperature, °C	+5°C to +32°C			
	Relative Humidity, %	40 % - 99 %			
Power supply		230 V / 50 Hz		380 V / 50 Hz	
Power consumption , W		1690 W	2200 W	2660 W	3300 W
Remote control		Yes	Yes	Yes	Yes
Dimensions	Height	900 mm	900 mm	900 mm	900 mm
	Length	1360 mm	1360 mm	1620 mm	1620 mm
	Width	325 mm	325 mm	395 mm	395 mm
Weight		95 kg	98 kg	105 kg	115 kg